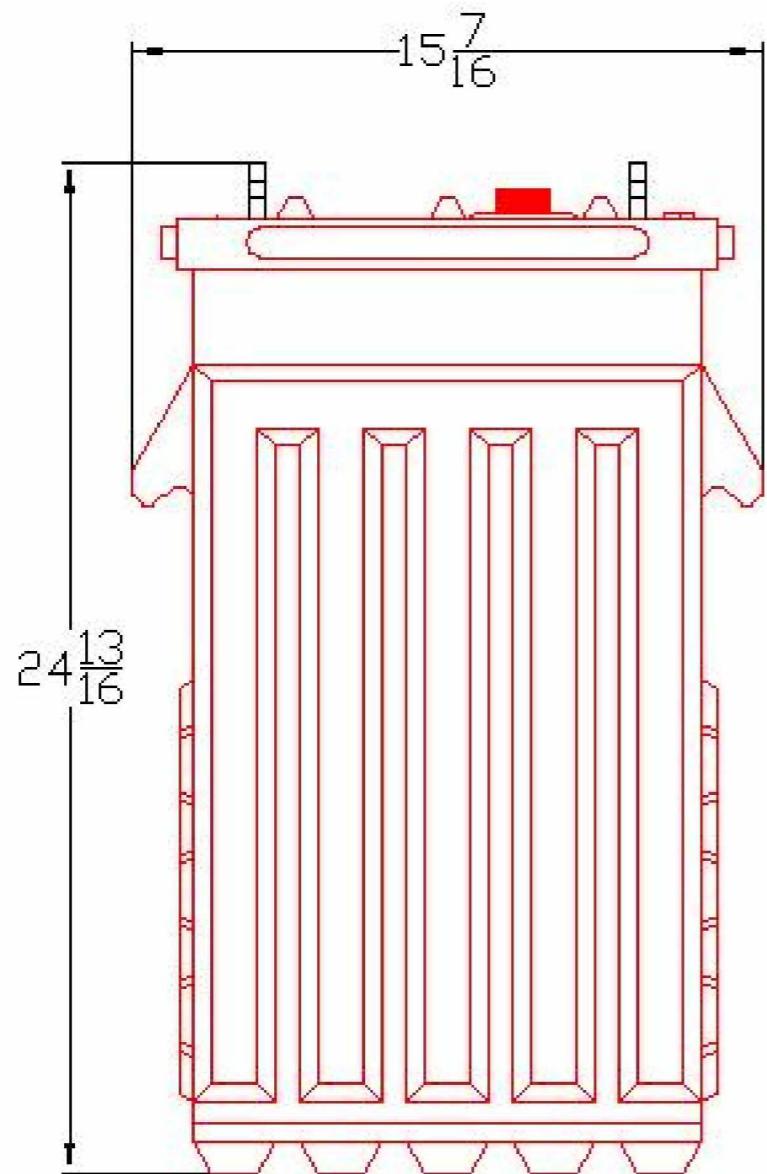
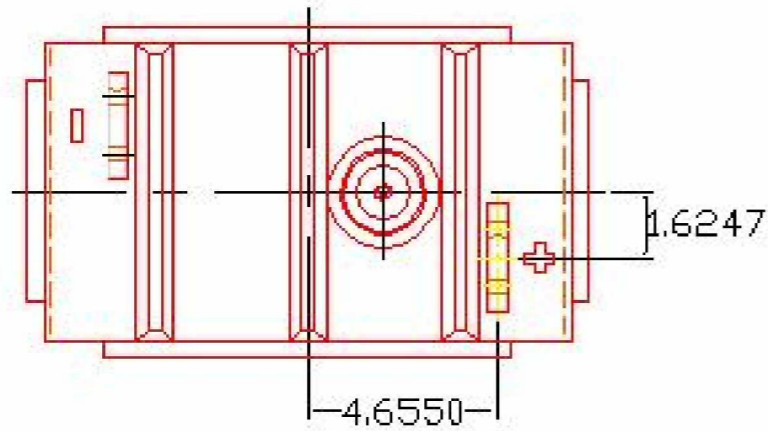




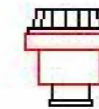
HEAVY DUTY DEEP CYCLE SERIES 5000

BATTERY TYPE	VOLTS	2	2 KS 33P
DIMENSIONS			
LENGTH	392 MM	15 4/9	INCHES
WIDTH	211 MM	8 1/3	INCHES
HEIGHT	630 MM	24 4/5	INCHES
WEIGHT DRY	66 KG	145	LBS.
WEIGHT WET	95 KG	208	LBS.
CONTAINER CONSTRUCTION			
INNER CONTAINER	POLYPROPYLENE		
INNER COVER	POLYPROPYLENE - HEAT SEALED TO INNER CONTAINER		
OUTER CONTAINER	HIGH DENSITY POLYETHYLENE		
OUTER COVER	HIGH DENSITY POLYETHYLENE SNAP FIT TO OUTER CONTAINER		
HANDLES	MOLDED		
PLATES PER CELL	33		
ELECTROLYTE RESERVE	ABOVE PLATES	95 MM	3.75 INCHES
DESIGN CRITERIA	10 YEAR WARRANTY	3300 CYCLES	15 YEAR LIFE
POSITIVE PLATE DIMENSION			
HEIGHT	432 MM	17.0	INCHES
WIDTH	143 MM	5.625	INCHES
THICKNESS	6.99 MM	0.275	INCHES
NEGATIVE PLATE DIMENSION			
HEIGHT	432 MM	17.0	INCHES
WIDTH	143 MM	5.625	INCHES
THICKNESS	4.57 MM	0.180	INCHES
SEPARATOR INSULATION	SEPARATOR THICKNESS	0.105 INCH	
	POSITIVE PLATE DOUBLE WRAPPED WITH SLYVER 0.020 HEAVY GLASS MAT AND ENVELOPED WITH HEAVY DUTY SEPARATOR		
TERMINALS	FLAG WITH STAINLESS STEEL NUTS AND BOLTS		
COLD CRANK	CCA	0°F / -17.8°C	4952
	MCA	32°F / 0°C	6190
	RESERVE	4915	
	MINUTES AT 25A		
CAPACITY	20 HR RATE	1766	
		CAP / AH	CURRENT / AMPS
CAPACITY AT THE 20 HOUR RATE	1.265 SP. GR.	1766	88.3
CAPACITY AT THE 15 HOUR RATE	1.265 SP. GR.	1660	110.7
CAPACITY AT THE 12 HOUR RATE	1.265 SP. GR.	1572	131.0
CAPACITY AT THE 10 HOUR RATE	1.265 SP. GR.	1501	150.1
CAPACITY AT THE 8 HOUR RATE	1.265 SP. GR.	1413	176.6
CAPACITY AT THE 6 HOUR RATE	1.265 SP. GR.	1307	217.8
CAPACITY AT THE 5 HOUR RATE	1.265 SP. GR.	1236	247
CAPACITY AT THE 4 HOUR RATE	1.265 SP. GR.	1148	287
CAPACITY AT THE 3 HOUR RATE	1.265 SP. GR.	1042	347
CAPACITY AT THE 2 HOUR RATE	1.265 SP. GR.	901	450
CAPACITY AT THE 1 HOUR RATE	1.265 SP. GR.	636	636



PART NUMBER: 2-KS-33P
 WEIGHT WET: 208 LB/ 94 KG
 WEIGHT DRY: 145 LB/ 66 KG
 CAPACITY: 1,448 AH 8 HR
 1,766 AH 20 HR
 2,491 AH 100 HR

OVERALL DIMS: 15 7/16 X 8 5/16 X 24 13/16



MAX HT WITH OPTIONAL 25 1/2" HYDROCAPS



BATTERY ENGINEERING
 SALEM, MASS. PRODUCT OF CANADA

TITLE: 2 KS 33P

DESCRIPTION:

2V / 1 CELL 33 PLATE 500/5000 SERIES

CONTACT INFO:

WEB: WWW.ROLLSBATTERY.COM
 E-MAIL: SALES@ROLLSBATTERY.COM
 PHONE: 1-800-681-9914

SCALE: 1" = 6"
 8.5" X 11"

JPEG
 NOT TO SCALE

DATE: 20-APR-04 REVISION REV 1

DRAWING NO: DWG 066, BD2KS33P